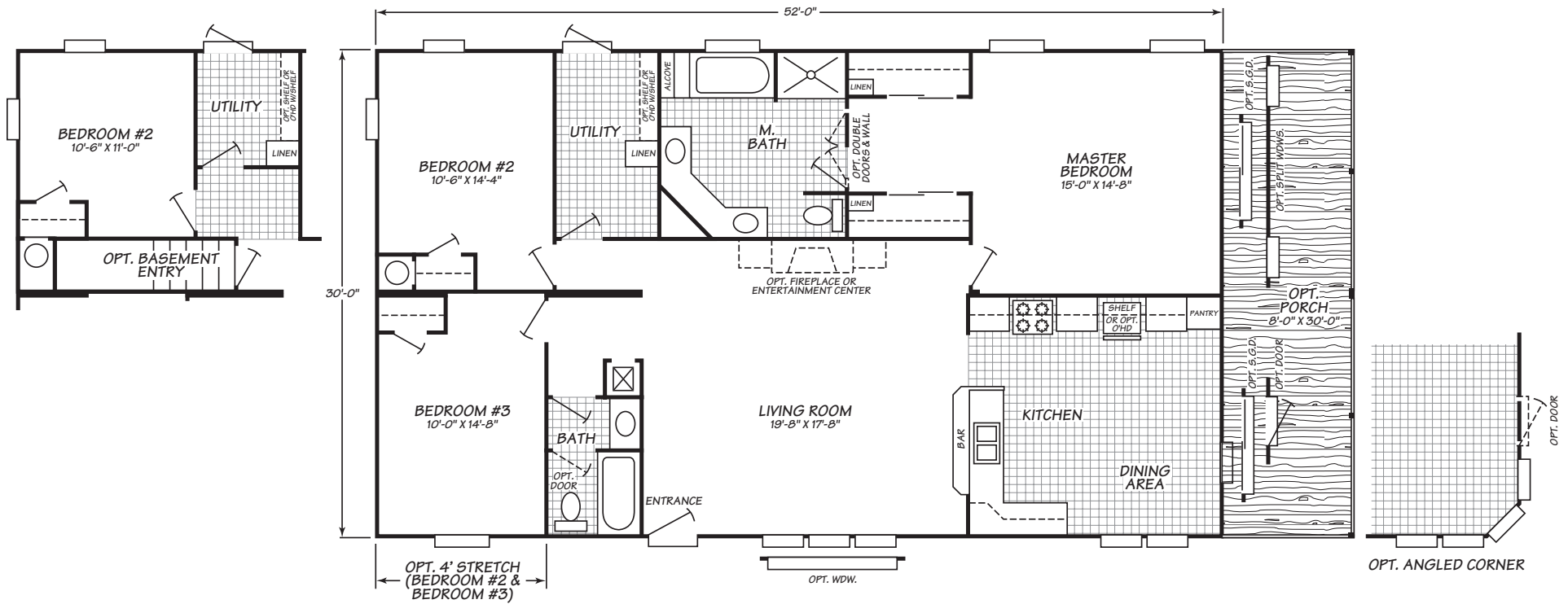


Crownpointe Series Model 0523C

3 Bedrooms • 2 Baths • 1,560 Square Feet



Windows shown reflect standard aluminum windows. Selection of optional thermal pane (vinyl) windows may affect the size and number of windows.

Fleetwood Homes reserves the right to change colors, prices, specifications, models, dimensions and materials without notice. Rendering and diagrams are meant to be representative and, in keeping with Fleetwood's policy of constant updating and improvement, may vary from the actual home. All dimensions are nominal and approximated. Square footage is measured from exterior wall to exterior wall, and is an approximate figure. Length indicated in floorplans is floor length only. The length of the hitch is not included. (Add four feet to arrive at transportable length.) Ask your retailer for specifics. PRICES AND SPECIFICATIONS SUBJECT TO CHANGE WITHOUT NOTICE OR OBLIGATION.

Interior

30" Embossed Six Panel White Interior Doors with Nickel Doorknobs
Contemporary & stylish with easy to use fixtures, creates a designer home look

96" Flat Ceiling More spacious, appealing rooms and greater energy efficiency

Stippled Ceiling Finish
Ceiling treatment creates finished residential look

Rebond Carpet Pad
Heavy-duty pad extends life of carpet

Vinyl Gypsum Wall Panels Attractive, easy to clean, and low maintenance

Exterior

2X4" Exterior Wall Frames, 16" on Center
Superior structural strength – the standard in residential construction

2X6" Floor Joists, 19.2" on Center (24' & 28' Homes) Stable, strong foundation for home structure and furnishings

2X8" Floor Joists, 19.2" on Center (32' Homes)
Stable, strong foundation for home structure and furnishings

Exterior Vinyl Siding
Durable, low maintenance, and never needs painting

Bath

60" Bathtub & Shower in Guest Bath Full-sized, durable, attractive, and easy to clean

Bathroom Exhaust Fan
Quiet and powerful, increases ventilation

Glamour Bath Package (Most Homes) The ultimate luxury-includes a deep bathtub, separate 54" shower, double sinks, deluxe lighting, and additional storage

Laminate Countertops
Long-lasting, attractive, and easy to clean

Porcelain Water Saver Toilets Durable and fashionable, water saver feature helps save on utility bills

Kitchen

Cityscape Cabinets
Spacious, durable, and appealing design with a custom kitchen style

30" Overhead Cabinets
Convenient, accessible storage with lined adjustable shelves for kitchen equipment & supplies

Drawers Over Doors Construction Efficient design enhances storage and keeps utensils close at hand

No-Wax Vinyl Floors
Beautiful appearance and easy to care for

Stainless Steel Kitchen Sink Durable, stain resistant sink is chip proof with easy to use lever faucet

Whirlpool® Appliances
Quality, dependability, and style-all backed by the Whirlpool warranty

Zargen Drawer System
Durable, smooth to open and close

Utilities, Safety & Energy

200 Amp Electrical Panel Box Designed and installed for safety, easy access and ample household capacity

40 Gallon Water Heater
Abundant hot water supply for laundry, bath, and kitchen

Exterior Electric Outlets & Water Faucets
Convenient power and water access for outdoor tools and yard care

R21/R11/R11 Insulation
Roof, exterior wall, and under-home insulation keeps home comfortable and helps lower utility bills

Water Shut-Off Valves
Quickly shut off water for repairs or in an emergency

Options

Accented Wall Panels
Adds a splash of color to enhance any room

Bull Nose Ceramic Edging Upgraded tile finish adds designer details

Deluxe Carpet Upgrade
Luxurious, heavier weight carpet in designer colors, meets all FHA specifications

Range Hood with Microwave Clean, appealing appearance, convenient location, and saves counter space

Molding Upgrade Package Upgrade enhances moldings throughout home

Stone Range Surround (Some Homes)
Architectural detail enhances custom kitchen look