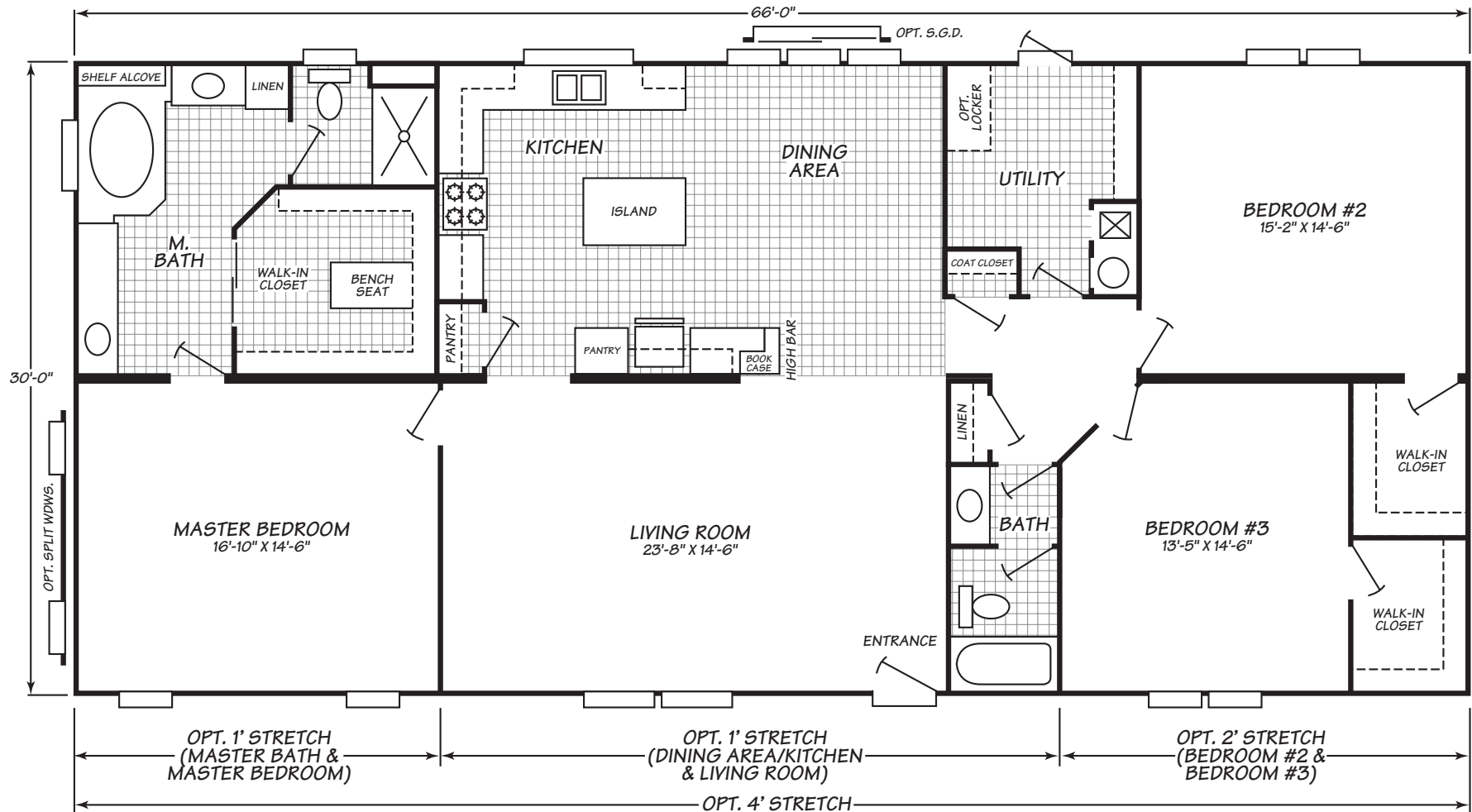


Glenbrook Series Model 0663B

3 Bedrooms • 2 Baths • 1,980 Square Feet



Windows shown reflect standard aluminum windows. Selection of optional thermal pane (vinyl) windows may affect the size and number of windows.

Fleetwood Homes reserves the right to change colors, prices, specifications, models, dimensions and materials without notice. Rendering and diagrams are meant to be representative and, in keeping with Fleetwood's policy of constant updating and improvement, may vary from the actual home. All dimensions are nominal and approximated. Square footage is measured from exterior wall to exterior wall, and is an approximate figure. Length indicated in floorplans is floor length only. The length of the hitch is not included. (Add four feet to arrive at transportable length.) Ask your retailer for specifics. PRICES AND SPECIFICATIONS SUBJECT TO CHANGE WITHOUT NOTICE OR OBLIGATION.

Interior

96" Flat ceiling More spacious, appealing rooms and greater energy efficiency

Decorative glass light fixtures Durable and attractive, adds an appealing detail to room lighting

Draperies Elegant drapery treatments elevate any room and provide privacy

Exterior

2"x4" Exterior wall frames, 16" on center Superior structural strength

2"x6" Floor joists, 16" on center Stable, strong foundation for home structure

Drip rail & mini-gutter Guide rain water into drainage system and help prevent water staining on siding

Floor decking glued & mechanically fastened to floor joists Structurally strong, warp resistant flooring is glued and fastened for maximum stability

Hardiplank® eave fascia Strong, durable, and trusted brand upgrades home appearance

One-piece under sheathing Barrier reduces air infiltration, prevents insulation from shifting, and improves energy efficiency

Bath

60" Bathtub & shower in all bathrooms Full-sized, durable, attractive, and easy to clean

Glamour bath package (most homes) The ultimate luxury-includes a deep bathtub, separate 54" shower, double sinks, deluxe lighting, and additional storage

Porcelain commodes in all bathrooms Durable and fashionable fixtures add a custom home detail

Exhaust fan Quiet and powerful, increases ventilation

Kitchen

30" Overhead cabinets Convenient, accessible storage for kitchen equipment & supplies

Hidden cabinet door hinges Concealed hinges create a clean, uncluttered look for cabinets

Whirlpool appliances Quality, dependability, and style-all backed by the Whirlpool warranty

Zargen drawer system Durable, smooth to open and close

Utilities, Safety & Energy

Front & back porch lighting Bright illumination improves safety and security at the front and back door

Shut-off valves for all commodes Quickly shut off water for repairs or in an emergency

Smoke detectors with battery back-up in all sleeping areas Protect every resident from fire danger and potentially get lower insurance rates

Options

4" Crown molding Generous moldings enhance home appearance

Ceiling fan Improve air circulation to stay warmer in winter and cooler in summer

Hinged roofs with 5/12 or 7/12 pitches available Choose from two roof pitch options, each offers a custom home look

Modular code construction (all homes) Meeting code requirements improves appraisals and allows homes to be built almost anywhere

Tape & texture with painted walls Finished, textured drywall enhances home appearance