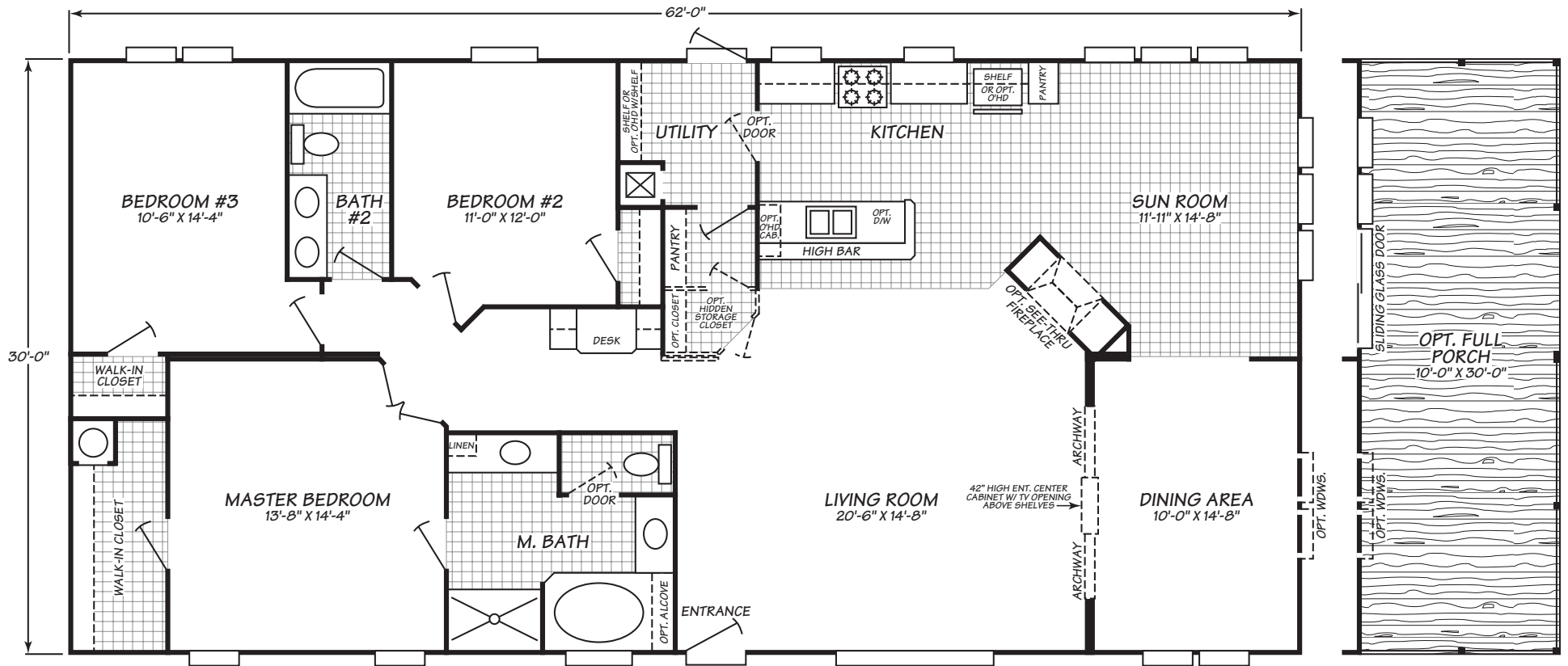




Crownpointe Series Model 0623C

3 Bedrooms • 2 Baths • 1,859 Square Feet



Fleetwood Homes reserves the right to change colors, prices, specifications, models, dimensions and materials without notice. Rendering and diagrams are meant to be representative and, in keeping with Fleetwood's policy of constant updating and improvement, may vary from the actual home. All dimensions are nominal and approximated. Square footage is measured from exterior wall to exterior wall, and is an approximate figure. Length indicated in floorplans is floor length only. The length of the hitch is not included. (Add four feet to arrive at transportable length.) Ask your retailer for specifics. PRICES AND SPECIFICATIONS SUBJECT TO CHANGE WITHOUT NOTICE OR OBLIGATION.

| Interior | Exterior | Bath | Kitchen | Utilities, Safety & Energy | Options |
|--|---|--|--|---|---|
| <p>30" Embossed Six Panel White Interior Doors with Nickel Doorknobs Contemporary & stylish with easy to use fixtures, creates a designer home look</p> <p>96" Flat Ceiling More spacious, appealing rooms and greater energy efficiency</p> <p>Stippled Ceiling Finish Ceiling treatment creates finished residential look</p> <p>Rebond Carpet Pad Heavy-duty pad extends life of carpet</p> <p>Vinyl Gypsum Wall Panels Attractive, easy to clean, and low maintenance</p> | <p>2X4" Exterior Wall Frames, 16" on Center Superior structural strength – the standard in residential construction</p> <p>2X6" Floor Joists, 19.2" on Center (24' & 28' Homes) Stable, strong foundation for home structure and furnishings</p> <p>2X8" Floor Joists, 19.2" on Center (32' Homes) Stable, strong foundation for home structure and furnishings</p> <p>Exterior Vinyl Siding Durable, low maintenance, and never needs painting</p> | <p>60" Bathtub & Shower in Guest Bath Full-sized, durable, attractive, and easy to clean</p> <p>Bathroom Exhaust Fan Quiet and powerful, increases ventilation</p> <p>Glamour Bath Package (Most Homes) The ultimate luxury-includes a deep bathtub, separate 54" shower, double sinks, deluxe lighting, and additional storage</p> <p>Laminate Countertops Long-lasting, attractive, and easy to clean</p> <p>Porcelain Water Saver Toilets Durable and fashionable, water saver feature helps save on utility bills</p> | <p>Cityscape Cabinets Spacious, durable, and appealing design with a custom kitchen style</p> <p>30" Overhead Cabinets Convenient, accessible storage with lined adjustable shelves for kitchen equipment & supplies</p> <p>Drawers Over Doors Construction Efficient design enhances storage and keeps utensils close at hand</p> <p>No-Wax Vinyl Floors Beautiful appearance and easy to care for</p> <p>Stainless Steel Kitchen Sink Durable, stain resistant sink is chip proof with easy to use lever faucet</p> <p>Whirlpool® Appliances Quality, dependability, and style-all backed by the Whirlpool warranty</p> <p>Zargen Drawer System Durable, smooth to open and close</p> | <p>200 Amp Electrical Panel Box Designed and installed for safety, easy access and ample household capacity</p> <p>40 Gallon Water Heater Abundant hot water supply for laundry, bath, and kitchen</p> <p>Exterior Electric Outlets & Water Faucets Convenient power and water access for outdoor tools and yard care</p> <p>R21/R11/R11 Insulation Roof, exterior wall, and under-home insulation keeps home comfortable and helps lower utility bills</p> <p>Water Shut-Off Valves Quickly shut off water for repairs or in an emergency</p> | <p>Accented Wall Panels Adds a splash of color to enhance any room</p> <p>Bull Nose Ceramic Edging Upgraded tile finish adds designer details</p> <p>Deluxe Carpet Upgrade Luxurious, heavier weight carpet in designer colors, meets all FHA specifications</p> <p>Range Hood with Microwave Clean, appealing appearance, convenient location, and saves counter space</p> <p>Molding Upgrade Package Upgrade enhances moldings throughout home</p> <p>Stone Range Surround (Some Homes) Architectural detail enhances custom kitchen look</p> |

Fleetwood Homes reserves the right to change colors, prices, specifications, models, dimensions and materials without notice. Rendering and diagrams are meant to be representative and, in keeping with Fleetwood's policy of constant updating and improvement, may vary from the actual home. All dimensions are nominal and approximated. Square footage is measured from exterior wall to exterior wall, and is an approximate figure. Length indicated in floorplans is floor length only. The length of the hitch is not included. (Add four feet to arrive at transportable length.) Ask your retailer for specifics. PRICES AND SPECIFICATIONS SUBJECT TO CHANGE WITHOUT NOTICE OR OBLIGATION.